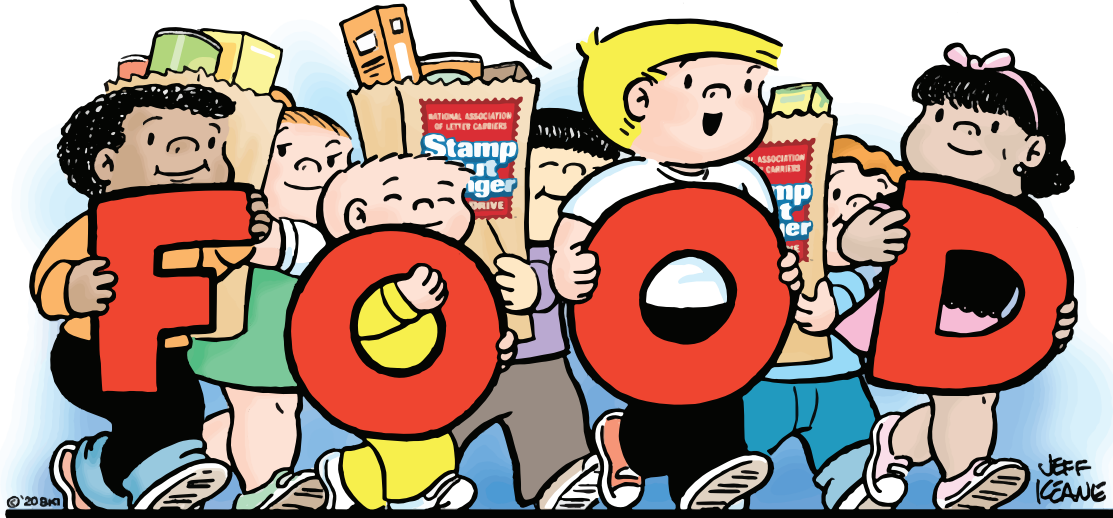


THIS SPELLS
HELP FOR LOTS OF
FAMILIES THIS
YEAR!



LETTER CARRIERS' FOOD DRIVE

**BRING IN NON-PERISHABLE
FOOD ITEMS BY FRIDAY, MAY 9**

CASH & DIGITAL DONATIONS ARE ALSO ACCEPTED!



THANK YOU TO OUR LOCAL PARTNERS

