

COUNTY HEALTH RANKINGS

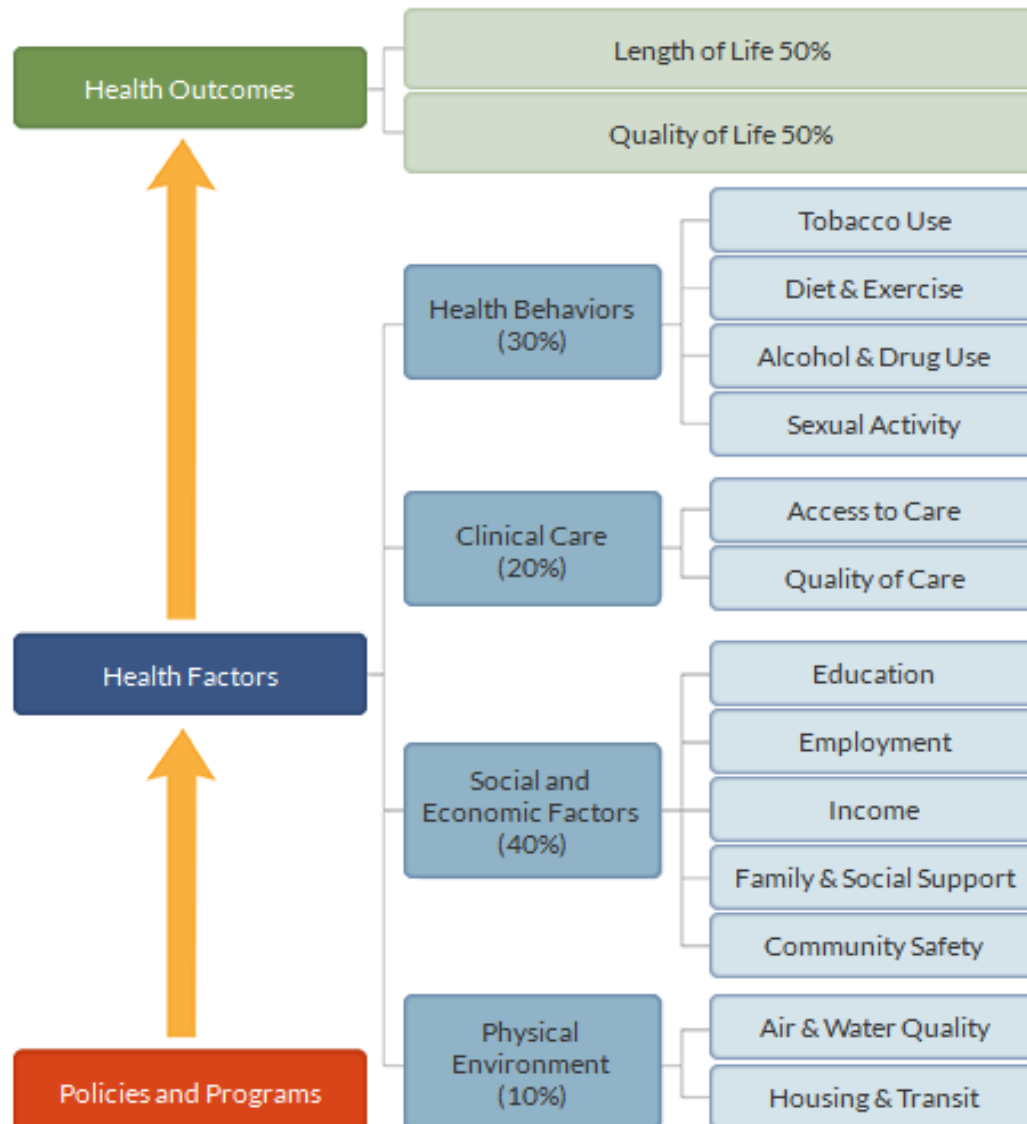
ANGELA WEIDEMAN – DIRECTOR/HEALTH OFFICER
CHIPPEWA COUNTY PUBLIC HEALTH

LIESKE GIESE – DIRECTOR/HEALTH OFFICER
EAU CLAIRE CITY-COUNTY HEALTH DEPARTMENT

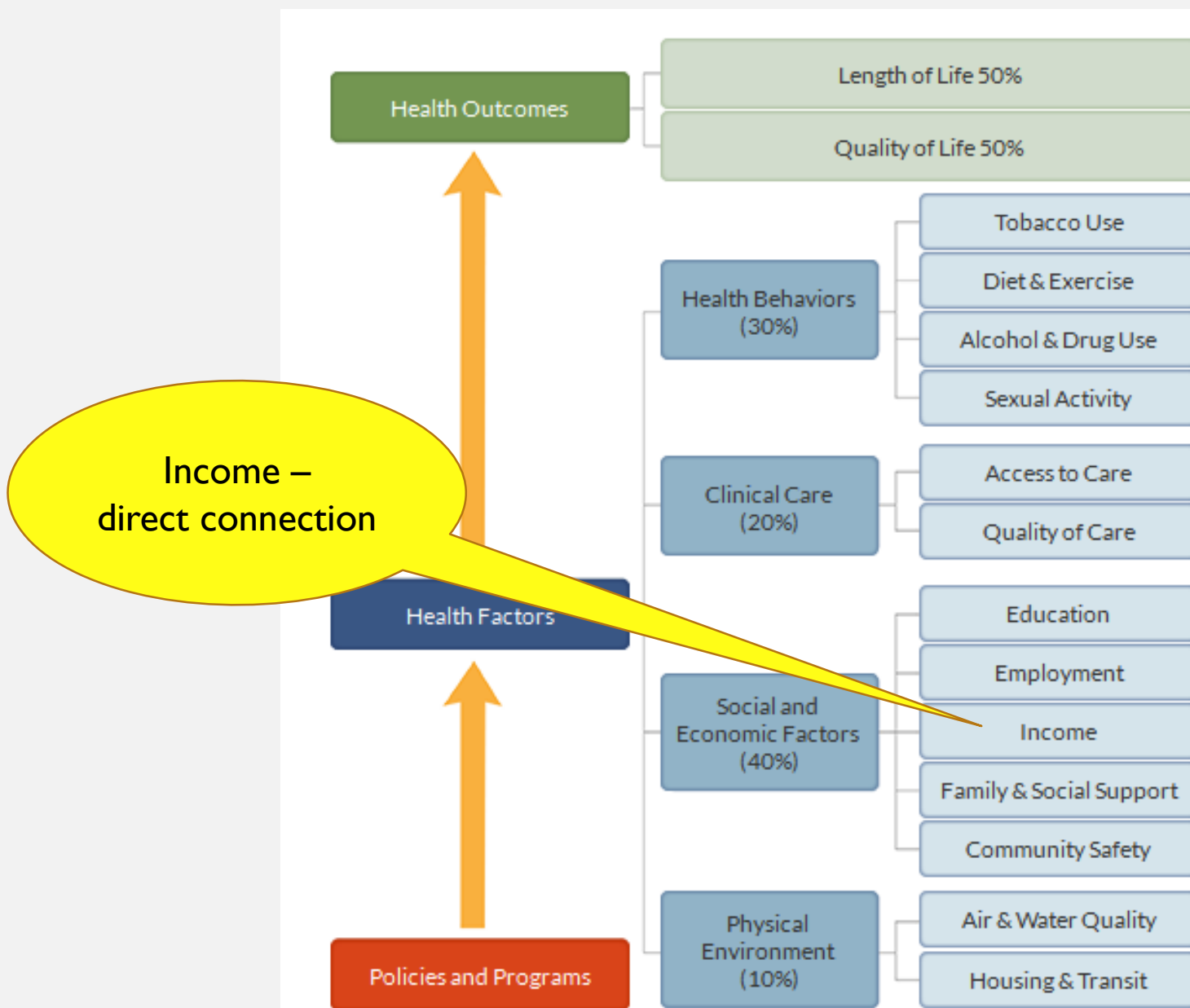
RANKINGS MODEL: BUILT ON SOCIAL DETERMINANTS OF HEALTH

Health outcomes
(today's health)

Health factors
(tomorrow'
health)



POVERTY IMPACTS HEALTH



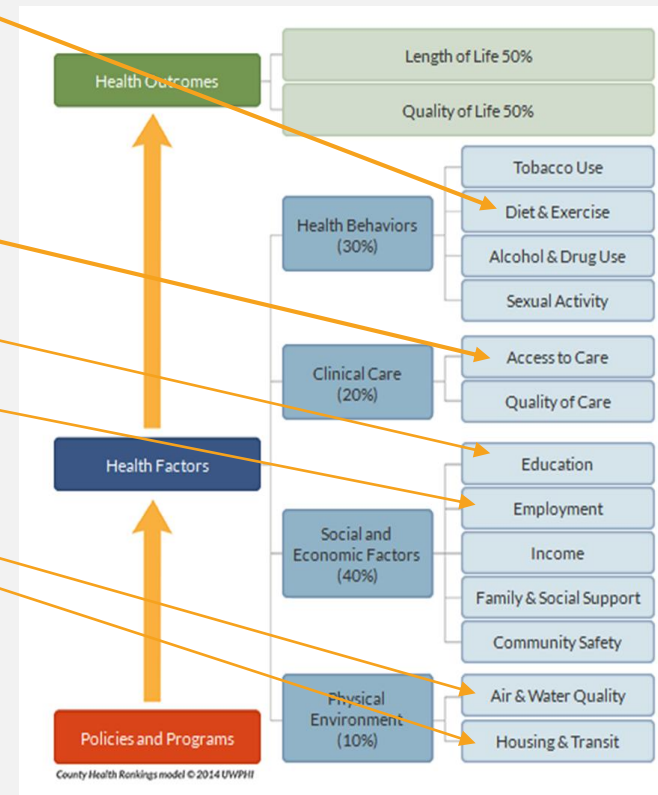
SOCIAL AND ECONOMIC FACTORS – DATA SOURCES

Social & Economic Factors

Education	High school graduation	EDFacts	2016-2017
	Some college	American Community Survey, 5-year estimates	2013-2017
Employment	<u>Unemployment</u>	Bureau of Labor Statistics	2017
Income	Children in poverty	Small Area Income and Poverty Estimates	2017
	Income inequality	American Community Survey, 5-year estimates	2013-2017
Family and Social Support	Children in single-parent households	American Community Survey, 5-year estimates	2013-2017
	Social associations	County Business Patterns	2016
Community Safety	Violent crime	Uniform Crime Reporting - FBI	2014&2016
	Injury deaths	CDC WONDER mortality data	2013-2017

OTHER DATA CONNECTED TO POVERTY

- Access to exercise opportunities
- Uninsured
- Education
- Employment
- Water quality
- Severe housing problems
- More



RANKINGS – WHY THEY MIGHT BE HELPFUL AND A COUPLE OF CAUTIONS.....

- Opportunity to look broadly at why we are healthy – it is not just whether we go to a healthcare setting and get a check up
- Opportunity to get community to care – we tend to want to improve
- Reminder that this is a relative ranking – up and down is in comparison to other counties in the state
- Reminder that this is built on national data sets – many other data points might be helpful and more current

LOTS OF DATA TO EXPLORE

Explore Your Snapshot

- The county snapshots provide tools to help make sense of the data and ranks on a snapshot. The snapshot data and these accompanying tools should be used to help understand what is happening in the community, what has happened over time, and for picking priorities and setting future goals.

Questions to Explore

- **1) What's the big picture of health in your county?**
- **2) How does your county compare to others?**
- **3) How has your county changed over time?**
- **4) Does health or opportunity vary by race in your county?**

EAU CLAIRE OPPORTUNITIES:

Key Findings from 2019 County Health Rankings for Eau Claire County

Areas of Strength:

- *Low rates of uninsured residents.*
- *High ratio of healthcare, mental health and dental providers per person. But these providers do often provide services to individuals who aren't Eau Claire County residents.*
- *Positive screening rates for breast cancer and flu vaccinations indicate a strong healthcare system in our county.*
- *Teen birth rate continues to be lower than the state. Our county does see differences by racial/ethnic groups. The teen birth rate for Eau Claire County Hispanic and Black teens is triple the rate of White teens.*
- *Other areas of strength are the unemployment rate and the number of adults that are college educated.*

EAU CLAIRE OPPORTUNITIES:

Key Findings from 2019 County Health Rankings for Eau Claire County

Areas for Improvement:

- *Early (premature) deaths have increased. Causes may be related to the drug overdose epidemic, suicide and alcohol-impaired driving deaths.*
- *69th out of 72 counties for preventable hospital stays. This trend is getting worse for our county. This may represent a tendency of patients to overuse hospitals as a main source of care, rather than their primary clinical care site.*
- *Increase in the number of sexually transmitted infections. This reflects the upward trend that is happening nationwide.*
- *67th out of 72 counties for income inequality. This means a wide gap between those most affluent and least affluent exists in our community.*
- *13% of residents have a severe housing burden. This means they are spending 50% of more of their household income on housing.*

CHIPPEWA OPPORTUNITIES

Key Findings from 2019 County Health Rankings for Chippewa County

Areas of Strength:

- *Premature death rates are lower than the state average*
- *Teen birth rates are lower than the state average*
- *We have a low number of uninsured people in the county*
- *Chippewa County is improving on the number of primary care/dentist per person. The ratio of dentist to people is still higher than the state average but improving.*
- *We have a high number of woman completing mammogram screenings*
- *Income inequality is lower than the state average*

CHIPPEWA OPPORTUNITIES

Key Findings from 2019 County Health Rankings for Chippewa County

Areas for Improvement:

- *Sexually transmitted infections are on the rise as they are in the state and nation*
- *Access to exercise opportunities is lower than the state average (rural)*
- *Alcohol impaired driving deaths are on the rise and concerning in Chippewa County*
- *The ratio of mental health provider to people is concerning*
- *Preventable hospital stays are on the rise*
- *Children in poverty is on the rise on our county and Hispanic children in Chippewa county are 4 times as likely to live in poverty*
- *Violent crimes are on the rise*
- *Physical activity is declining and adult obesity is increasing*

SUMMARY

- Chippewa and Eau Claire Counties pair on many preventative initiatives especially early home visiting and mental health prevention.
- We work collaboratively to assess the health of our communities and to improve the health of our communities
- Not having enough money to pay for basic needs and health care contribute to poor health outcomes, and there are disparities for specific populations.

County Health Rankings & Roadmaps

Building a Culture of Health, County by County

A Robert Wood Johnson Foundation program

MORE INFORMATION:

[HTTPS://WWW.COUNTYHEALTHRANKINGS.ORG/EXPLORE-HEALTH-RANKINGS](https://www.countyhealthrankings.org/explore-health-rankings)